

If you could create an AI tool, what features would it have?

Share your answers with the people
sitting near you.

Beyond Boundaries: AI Infused Extension for Progressive Solutions

Co-authors: Maria Barga and Naimani Staley

UNIVERSITY OF
MARYLAND
EXTENSION

UNIVERSITY OF
MARYLAND
EXTENSION



Marylanders
Online



University programs, activities, and facilities are available to all without regard to race, color, sex, gender identity or expression, sexual orientation, marital status, age, national origin, political affiliation, physical or mental disability, religion, protected veteran status, genetic information, personal appearance, or any other legally protected class.



United States Department of Agriculture



In accordance with Federal law and U.S. Department of Agriculture (USDA) civil rights regulations and policies, this institution is prohibited from discriminating on the basis of race, color, national origin, sex (including gender identity and sexual orientation), age, disability, and reprisal or retaliation for prior civil rights activity.

Program information may be made available in languages other than English. Persons with disabilities who require alternative means of communication for program information (e.g., Braille, large print, audiotape, and American Sign Language) should contact the responsible State or local Agency that administers the program or USDA's TARGET Center at (202) 720-2600 (voice and TTY) or contact USDA through the Federal Relay Service at (800) 877-8339.

To file a program discrimination complaint, a complainant should complete a Form AD-3027, USDA, Program Discrimination Complaint Form, which can be obtained online, at <https://www.usda.gov/sites/default/files/documents/ad-3027.pdf>, from any USDA office, by calling (866) 632-9992, or by writing a letter addressed to USDA. The letter must contain the complainant's name, address, telephone number, and a written description of the alleged discriminatory action in sufficient detail to inform the Assistant Secretary for Civil Rights (ASCR) about the nature and date of an alleged civil rights violation. The completed AD-3027 form or letter must be submitted to USDA by:

mail:
U.S. Department of Agriculture
Office of the Assistant Secretary for Civil Rights
1400 Independence Avenue, SW
Washington, D.C. 20250-9410; or

fax:
(833) 256-1666 or (202) 690-7442; or

email:
program.intake@usda.gov.

This institution is an equal opportunity provider.

Conforme a la ley federal y las políticas y regulaciones de derechos civiles del Departamento de Agricultura de los Estados Unidos (USDA), esta institución tiene prohibido discriminar por motivos de raza, color, origen nacional, sexo (incluyendo identidad de género y orientación sexual), edad, discapacidad, venganza o represalia por actividades realizadas en el pasado relacionadas con los derechos civiles.

La información del programa puede estar disponible en otros idiomas además del inglés. Las personas con discapacidades que requieran medios de comunicación alternativos para obtener información sobre el programa (por ejemplo, Braille, letra agrandada, grabación de audio y lenguaje de señas americano) deben comunicarse con la agencia estatal o local responsable que administra el programa o con el TARGET Center del USDA al (202) 720-2600 (voz y TTY) o comunicarse con el USDA a través del Servicio Federal de Transmisión de Información al (800) 877-8339.

Para presentar una queja por discriminación en el programa, el reclamante debe completar un formulario AD-3027, Formulario de queja por discriminación del programa del USDA, que se puede obtener en línea, en <https://www.usda.gov/sites/default/files/documents/ad-3027a.pdf>, en cualquier oficina del USDA, llamando al (866) 632-9992, o escribiendo una carta dirigida al USDA. La carta debe contener el nombre, la dirección y el número de teléfono del reclamante, y una descripción escrita de la supuesta acción discriminatoria con suficiente detalle para informar al Subsecretario de Derechos Civiles (ASCR, por sus siglas en inglés) sobre la naturaleza y la fecha de la presunta violación de los derechos civiles. La carta o el formulario AD-3027 completado debe enviarse al USDA por medio de:

correo postal:
U.S. Department of Agriculture
Office of the Assistant Secretary for Civil Rights
1400 Independence Avenue, SW
Washington, D.C. 20250-9410; o

fax:
(833) 256-1666 o (202) 690-7442; o

correo electrónico:
program.intake@usda.gov.

Esta institución ofrece igualdad de oportunidades.

Objectives:

- Define AI and understand it's basic concepts.
- Discover AI tools that optimize productivity for Extension Duties.
- Evaluate the pro's and con's of incorporating productivity tools that operate using AI.



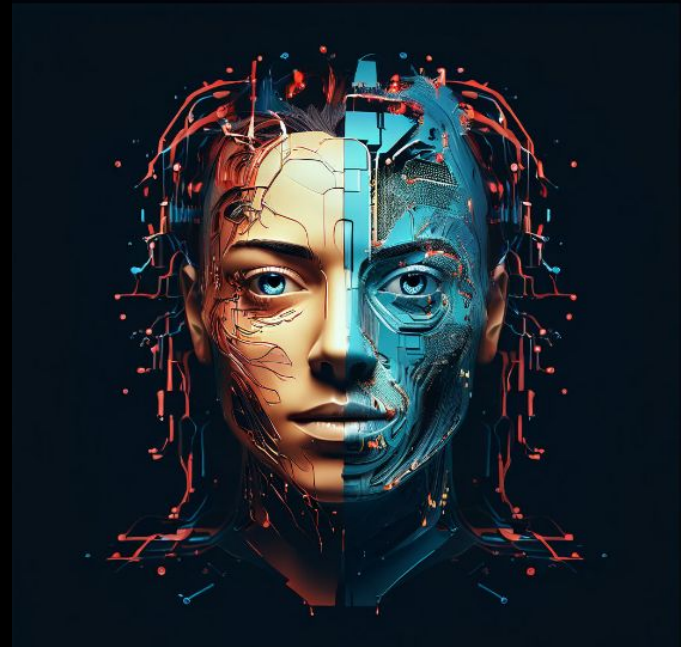
What is Artificial Intelligence?

A catchall term used to describe “intelligent machines” which can solve problems, make/suggest decisions and perform tasks that have traditionally required humans to do.

Narrow intelligence- performs a specific task

General intelligence- understands and learns new skills.

Super intelligence- stage where machines surpass humans.



AI generated image

[Source: https://connect.extension.org/](https://connect.extension.org/)



Example of Super Intelligence:



What are the different types of AI and what do they do?

Artificial Intelligence (AI):

A Constellation of different technologies.

Machine Learning:

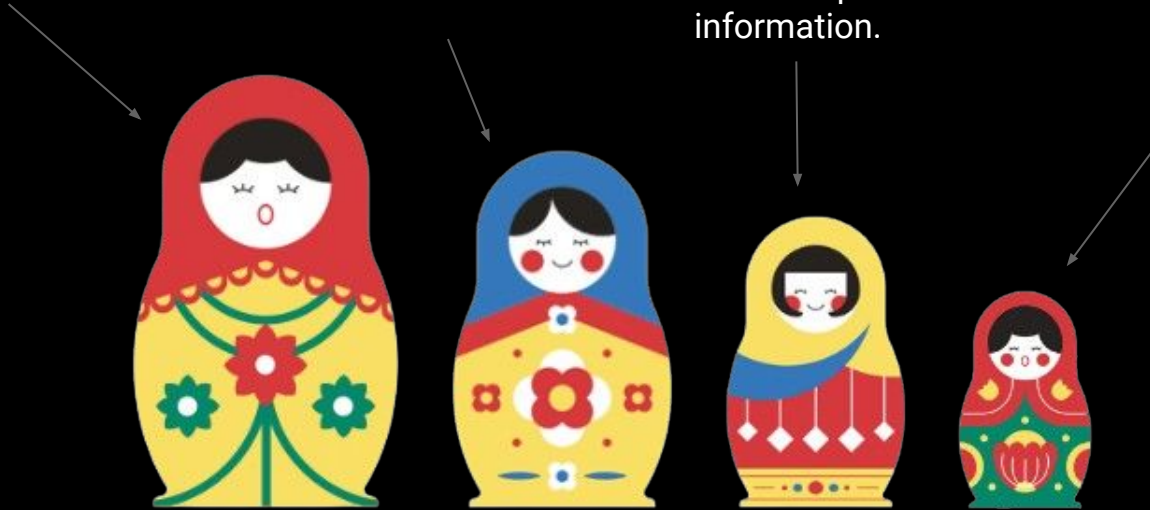
A subset of AI algorithms that learn without being explicitly programmed with rules.

Neural Network:

a specific type of deep learning model that is inspired by the way the brain processes information.

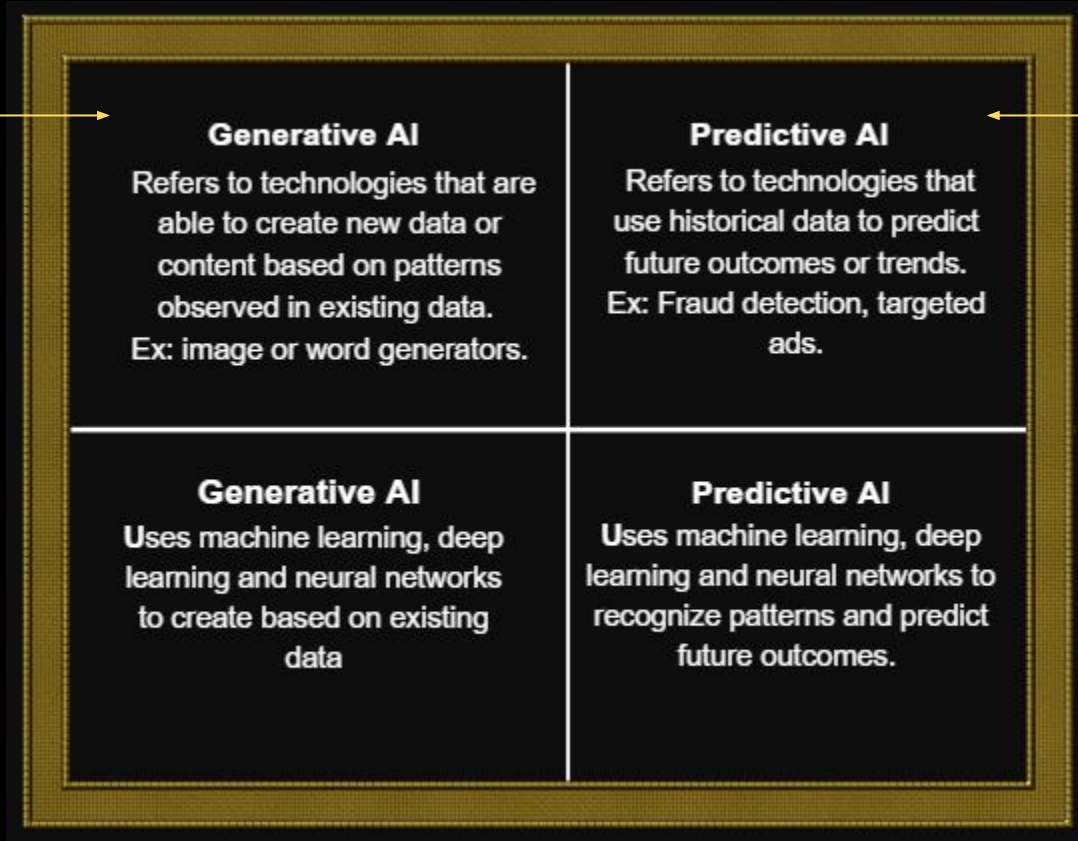
Deep Learning:

a type of artificial intelligence that uses complex algorithms to help computers learn and make decisions on their own.



AI for end users: Frame of Reference

ChatGPT,
Perplexity,
Canva Magic
Studio, Zoom AI



Fraud
Detection,
Weather,
Image
recognition



A large yellow triangle pointing right, with a black triangle pointing left, creating a central black space where the text is located.

Recommended Apps & Extensions



ChatGPT

vs



perplexity



<https://www.youtube.com/watch?v=mILx0jVxqzI>





ChatGPT

vs



perplexity

Example Usage:

Email Draft Prompts:

- Introducing myself
- Partner collaboration
- Nice meeting you

Lesson Planning :

- Layout for lesson plan
- Powerpoint layout
- Speech / elevator pitch

Example Usage:

- Research for projects
- Deep diving a topic of interest
- Summarize PDF





Gamma AI



<https://www.youtube.com/watch?v=r9VOYJM6nZc>





Gamma AI

Example Usage:

- Presentation
- Introductory Meeting
- Teaching (Course, Workshop, or Lecture)
- Partner / Stakeholder Meetings



Canva

Magic Studio





Magic Studio

- Magic write
- Canva Draw Tool
- Magic Design
- Magic Switch
- Magic Edit
- Magic Animate
- Magic Media
- Magic Resize
- Magic Eraser
- Magic Translate
- Magic Presentation
- Magic Expand
- Magic Grab



zoom AI Companion



zoom AI Companion

- Catch up on missed discussions
- Generate meeting summaries
 - Includes highlights, action items, and next steps.
- Compose emails and messages
- Whiteboard Content Generation
- Real-time translation and transcription
- Streamline meeting coordination





Calendly is a virtual availability and booking app used to schedule meetings, appointments, and events for individuals and organizations.



A scheduling assistant that syncs your to-do list with your Google or Microsoft calendar to help you do your best work.



Activity: Reflection

Use the post it's to finish the sentences for the following statements:

I like...

I will use...

I question...

I fear...

Additional AI recommendations:



Q&A:



Please leave us your
feedback.





THE KEYSTONE
OF TECHNOLOGY

Pink 2.3

"Beyond Boundaries: AI-Infused Extensions for Progressive Solutions"

Scan code in your event app



AU6XHPec

<https://marylandersonline.umd.edu/>



UNIVERSITY OF
MARYLAND
EXTENSION



Marylanders
Online

